

EKI TECHNICAL PRESENTATION #26

COSUMNES SUBBASIN GSP DEVELOPMENT

17 MARCH 2021

COSUMNES SUBBASIN WORKING GROUP MEETING

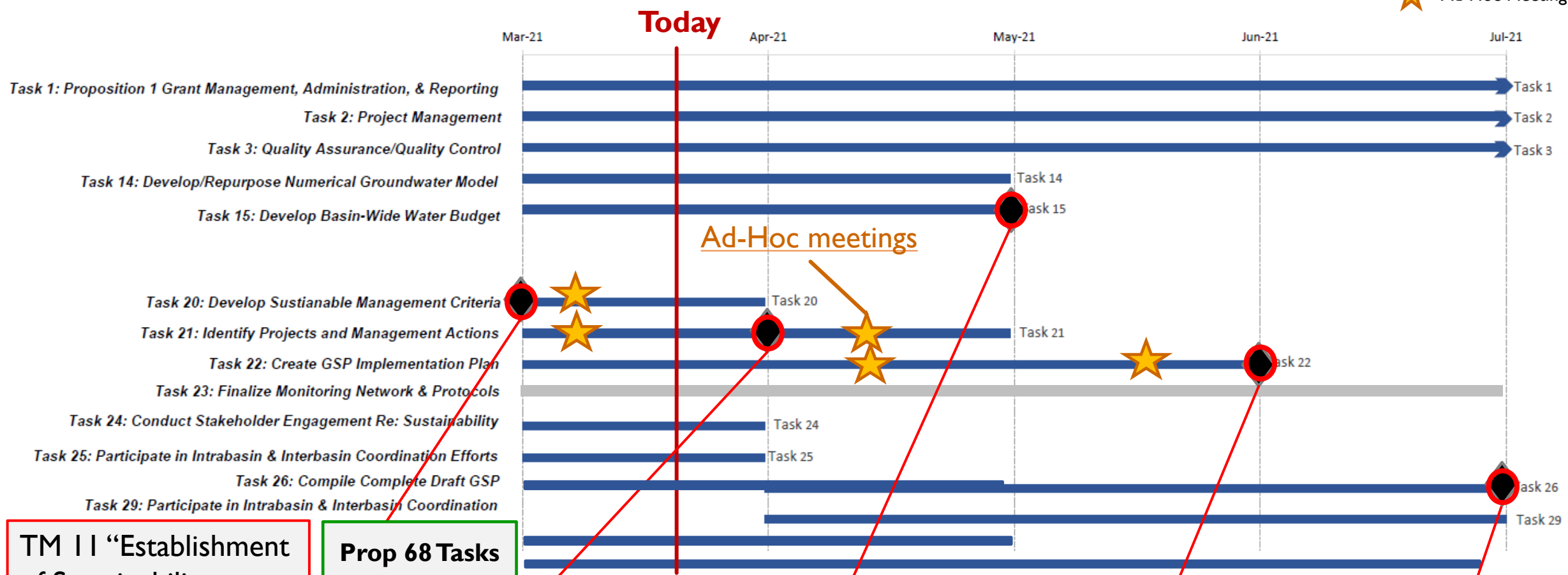
AGENDA ITEM #2

GROUNDWATER SUSTAINABILITY PLAN TECHNICAL WORK AND PLANNING

- 3-month and 2021 Look Ahead
 - CoSANA model update
- Progress on Prop 68 Tasks
 - Monitoring Well Siting Status and Planning/Meter Installation
 - Update on ongoing studies
 - Feedback from SWAG Meeting #4
- Technical Memorandum (TM) #11: Sustainable Management Criteria
- Introduction to GSP Implementation TM #13

THREE MONTH LOOK AHEAD – 03/17/2021

- Current schedule
- ◆ Deadline
- ★ Ad-Hoc Meeting



TM 11 “Establishment of Sustainability Criteria” Working Group comments due 3/31/21

Prop 68 Tasks

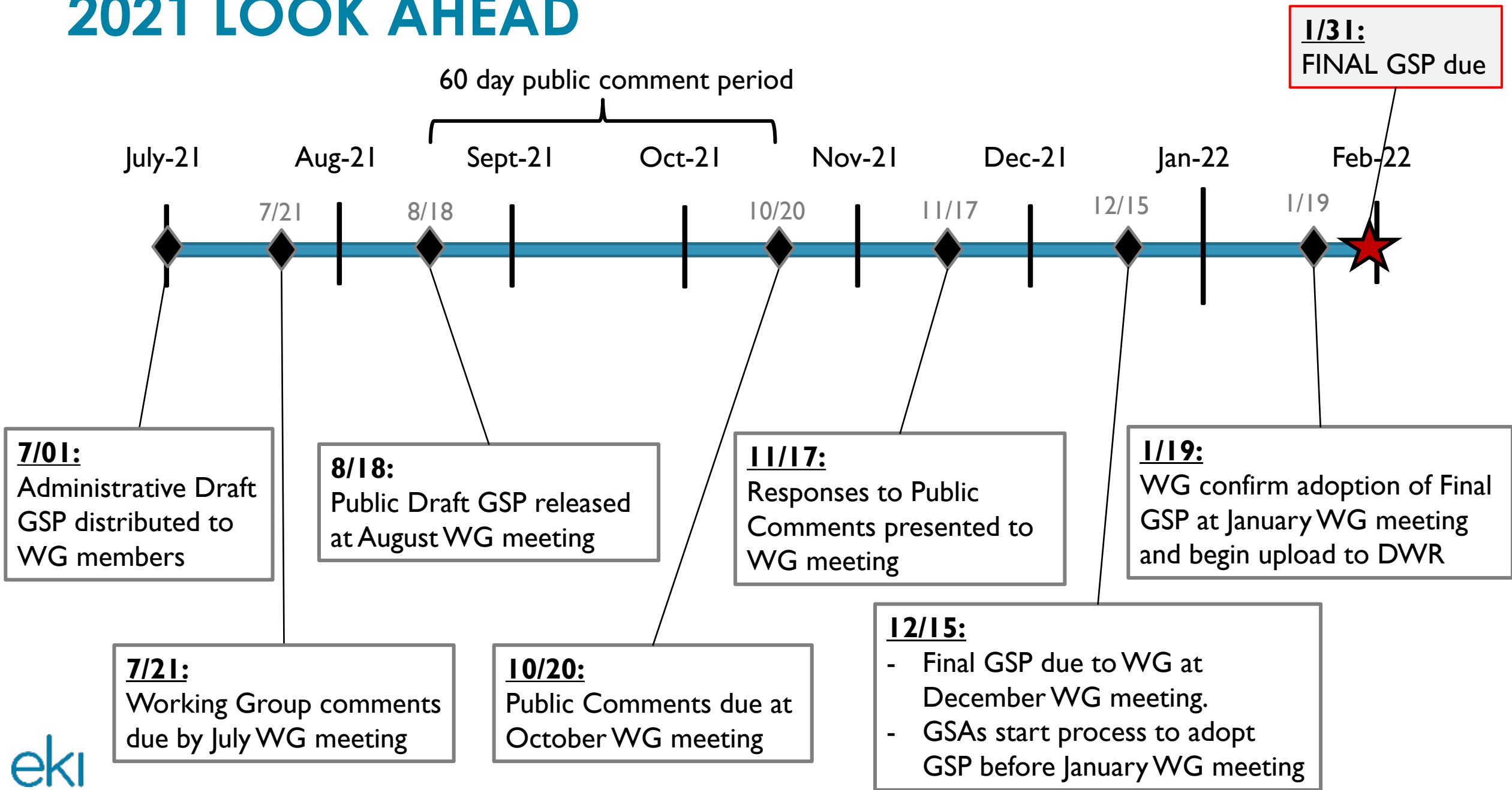
TM 12 “Proposed Projects and Management Actions”

TM 8 “Water Budget and Estimate of Sustainable Yield”

TM 13 “GSP Implementation Plan”

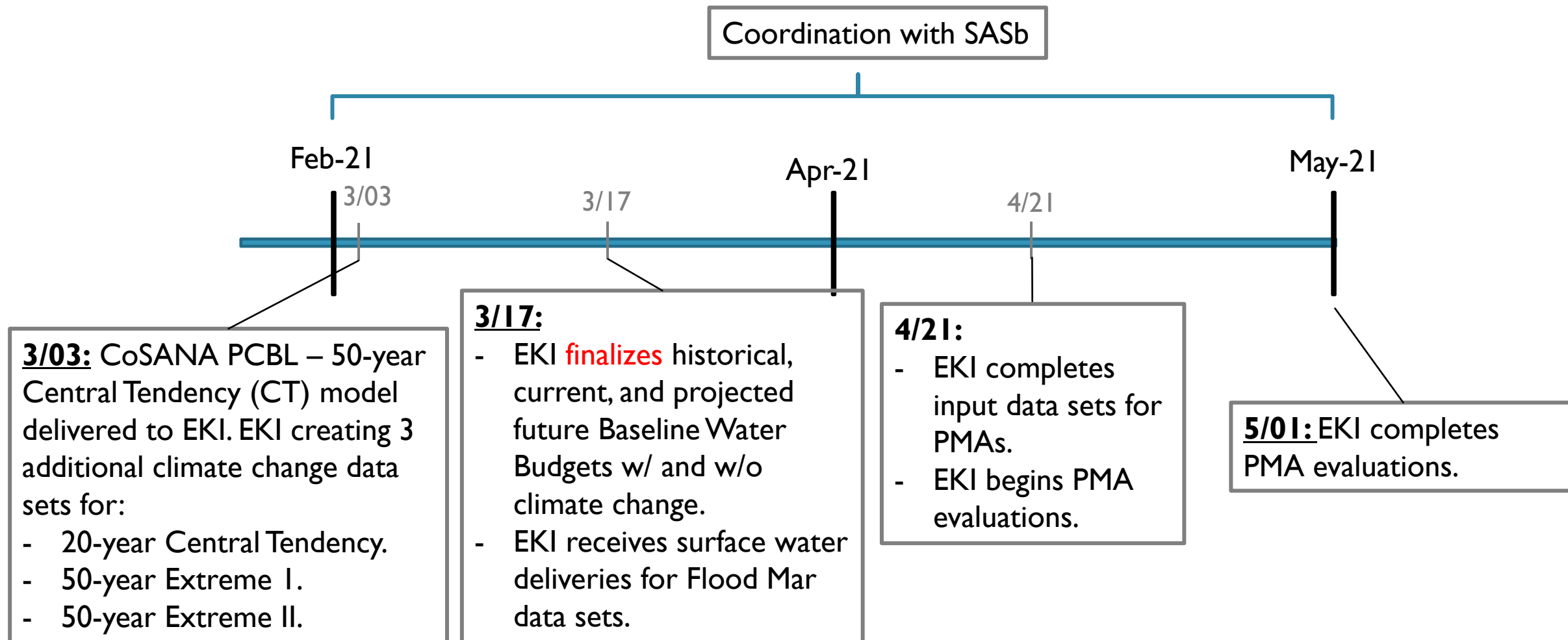
Administrative Draft GSP

2021 LOOK AHEAD



CoSANA MODEL UPDATE

Schedule



PROP 68 TASKS (1 OF 2)

- Monitoring Wells:
 - Completed: Locations finalized, CEQA analysis in progress for all wells.
 - Next Steps: Finish CEQA analysis, submit necessary information to DWR (CEQA NOE, receipt of filing, access agreements, site maps and proposed well design), EKI to put bid out for well driller.
- Meter Installations:
 - Moving forward with installing 3 meters (vineyard, ag-res, horse property).
 - Still waiting on final access agreement from aquaculture well.
- Field verification study completed 2/20-2/28
 - Subconsultants reported successful effort.
 - Findings indicated in general healthy ecosystems.
 - Preparing final report and coordination with South American Subbasin.

PROP 68 TASKS (2 OF 2)

- Final Surface Water Advisory Group (SWAG) Meeting #4 was held on February 26th
 - Reemphasis that SWAG is focused on Interconnected Surface water and GDEs.
 - Encouraged sustained focus and monitoring of perched aquifers; multi-benefit projects.
 - Reiterated support for current PMAs list (“you all are focused on the right mix of stuff”).
 - Underscored importance of inter-basin coordination on GSP development and PMAs.
 - Positive feedback on process – opportunity for learning and sharing perspectives.
 - Interest in continuing SWAG meetings during GSP implementation.

TM#11: SUSTAINABLE MANAGEMENT CRITERIA

- Technical Memorandum (TM) #11 - Sustainable Management Criteria
 - Introduction to Sustainable Management Criteria
 - Sustainability Goal
 - Undesirable Results
 - Minimum Thresholds *(draft numerical values subject to change)*
 - Measurable Objectives and Interim Milestones *(draft numerical values subject to change)*
- Draft Chapter was distributed to the GSAs for review on March 2nd.
- Red-line edits and comments from the GSAs are due to CBI by March 31st.

DRAFT Establishment of Sustainability Criteria
Cosumnes Subbasin

3. UNDESIRABLE RESULTS

DRAFT Establishment of Sustainability Criteria
Cosumnes Subbasin

2. SUSTAINABILITY GOAL

§ 354.24 Sustainability Goal
Each Agency shall establish in its Plan a sustainability goal for the basin that culminates in the Plan

DRAFT Establishment of Sustainability Criteria
Cosumnes Subbasin

1. INTRODUCTION TO SUSTAINABLE MANAGEMENT CRITERIA

§ 354.22. Introduction to Sustainable Management Criteria
This Subarticle describes criteria by which an Agency defines conditions in its Plan that constitute sustainable groundwater management for the basin, including the process by which the Agency shall characterize undesirable results, and establish minimum thresholds and measurable objectives for each applicable sustainability indicator.

The Sustainable Groundwater Management Act (SGMA) legislation defines a "Sustainability Goal" as "the existence and implementation of one or more groundwater sustainability plans [GSPs] that achieve sustainable groundwater management by identifying and causing the implementation of measures targeted to ensure that the applicable basin is operated within its sustainable yield" (California Water Code [CWC] § 10721(u)). The SGMA requires Groundwater Sustainability Agencies (GSAs) to develop and implement GSPs to meet the Sustainability Goal (CWC § 10727(a)) and defines terms related to achievement of the Sustainability Goal, including:

- Measurable Objective (MO) – "specific, quantifiable goals for the maintenance or improvement of specified groundwater conditions that have been included in an adopted Plan to achieve the sustainability goal for the basin" (23 CCR § 351(s));
- Minimum Threshold (MT) – "a numeric value for each sustainability indicator used to define undesirable results" (23 CCR § 351(t)); and
- Interim Milestone (IM) – "a target value representing measurable groundwater conditions, in increments of five years, set by an Agency as part of a Plan" (Title 23, California Code of Regulations (23 CCR § 351(q))).

Collectively, the Sustainability Goal, IMs, MOs, and MTs are referred to herein as Sustainable Management Criteria (SMCs).

The SGMA further defines six Sustainability Indicators as the "significant and unreasonable": (1) Chronic Lowering of Groundwater Levels, (2) Reduction of Groundwater Storage, (3) Seawater Intrusion, (4) Degraded Water Quality, (5) Land Subsidence, and (6) Depletions of Interconnected Surface Water² (CWC § 10721(x)). The GSP Emergency Regulations specify how GSAs must establish SMCs for each applicable Sustainability Indicator. Sections 2, 3, 4, and 5 describe the Sustainability Goal, Undesirable Results, MTs, and MOs and IMs, respectively, that have been developed as part of this GSP.

Page 8
EKI Environment & Water, Inc.

Page 6
EKI Environment & Water, Inc.

March 2021

² Groundwater Dependent Ecosystems (GDEs) are considered herein under both Chronic Lowering of Groundwater Levels and Depletions of Interconnected Surface Water Sustainability Indicators.

GSP IMPLEMENTATION (1 OF 5)

■ Implementation Plan

“Plan implementation” refers to an Agency’s exercise of the powers and authorities described in the Act, which commences after an Agency adopts and submits a Plan or Alternative to the Department and begins exercising such powers and authorities.⁽¹⁾

⁽¹⁾ CCR § 351. Definitions (Y)



GSP IMPLEMENTATION (2 OF 5)

■ Implementation Plan Elements

1. Groundwater Monitoring and Reporting Activities
2. Stakeholder Outreach
3. Implementation of Projects and Management Actions
(i.e., proactively identify and avoid potential triggers of Undesirable Results)



OHWD Recharge Project (pictures from Laura Foglia, LWA.)

GSP IMPLEMENTATION (3 OF 5)

■ Implementation Plan Actions



Monitoring and Data Collection

- Sustainability Indicator monitoring (water level measurements and water quality sampling)
- Collection of other required information (e.g., groundwater pumping, surface water diversions, gauge readings, etc. as applicable)



Data Gap Filling

- Interconnected surface water
- GW use and consumption (meter readings, groundwater budget and surface water budget components)
- Well inventory



Reporting

- Bi-Annual Water Level data upload
- Annual Reports due April 1st each year following GSP adoption
- Periodic evaluation of the GSP (5-Year Update)



Stakeholder Outreach

- GSA Board Meetings, Working Group Meetings & annual Stakeholder Workshops
- Website maintenance



Implementation of Projects and/or Management Actions

- Following program tracking
- Planning and construction of recharge projects
- Forging partnerships for banking operation

GSP IMPLEMENTATION (4 OF 5)

- GSA needs a clear definition of *roles and responsibilities* for Implementation Plan actions
 - (e.g., each GSA member agency is responsible for data collection within their own wells and service area)



Monitoring and Data Collection



Data Gap Filling



Reporting



Stakeholder Outreach



Projects and/or Management
Actions Implementation

GSP IMPLEMENTATION (5 OF 5)

Preliminary Estimate of Implementation Plan Costs Needed for GSP

Groundwater Management Cost	Estimated Average Annual GSP Implementation Costs				
	Year 1 2022	Year 2 2023	Year 3 2024	Year 4 2025	Year 5 2026
Part 1. Groundwater Monitoring and Reporting	TBD	TBD	TBD	TBD	TBD
Part 2. Stakeholder Outreach	TBD	TBD	TBD	TBD	TBD
Part 3. Implementation of P&MAs	TBD	TBD	\$2.25M	\$2.25M	\$2.25M
Annual Subtotal:	TBD	TBD	TBD	TBD	TBD

Note: TBD = to be determined

NEXT STEPS

- WG complete SMC TM review and submit comments to CBI by 3/31/21.
- EKI transmit final reports from geophysical consultants when available (expected before 3/31/21).
- EKI complete P/MA TM (4/1/21).
- EKI complete isotopic data evaluation TM (4/30/21).
- GSAs to finish CEQA analysis for proposed monitoring well sites; EKI to finish preparing necessary documents to submit to DWR (health & safety plan, monitoring plan, proposed well construction, maps). (4/30/21).
- GSAs to finalize access to voluntary wells to have meters installed, and EKI contract well driller for installation work. (4/30/21).

THE END