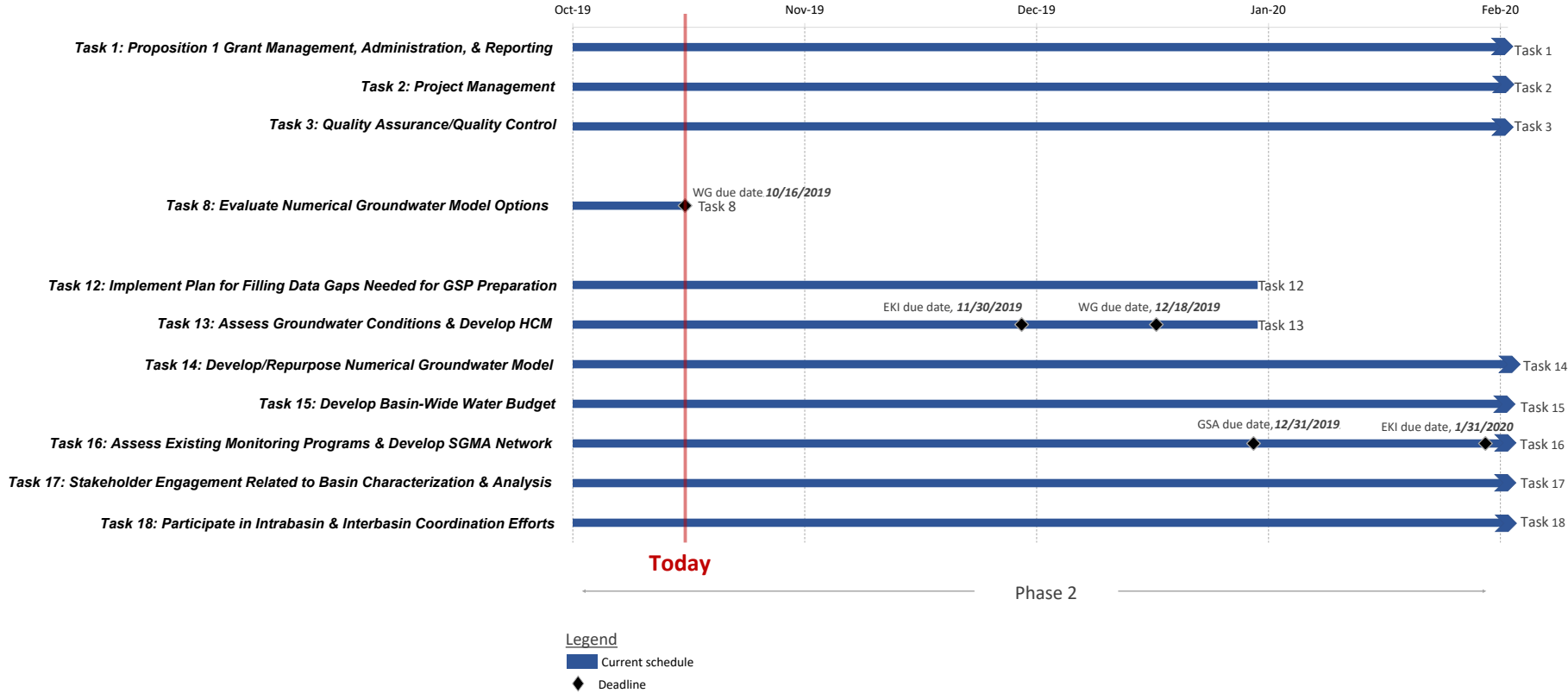


# Cosumnes Subbasin GSP Schedule - 3 Month Look Ahead



## **Deadlines within the next 3 Months**

### **Task 8: Evaluate Numerical Groundwater Model Options**

- EKI** Conduct the evaluation of numerical groundwater model options and prepare associated work products (*Updated Draft TM #3 – Numerical Groundwater Model Evaluations and Recommendations – due 9/18/2019*).
- WG** Review and provide feedback on TM #3;-Make final decision regarding the numerical groundwater model by 10/16/2019.

### **Task 13: Assess Groundwater Conditions & Develop HCM**

- EKI** Develop the Groundwater Conditions Assessment and Hydrogeologic Conceptual model and associated interim work products (*Draft TM #6 – Groundwater Conditions and Hydrogeologic Conceptual Model – due 11/30/2019*).
- WG** Review and provide feedback on TM #6 by **12/18/2019**.

### **Task 16: Assess Existing Monitoring Programs & Develop SGMA Network**

- EKI** Assess existing monitoring programs and propose a SGMA compliant monitoring network, and prepare the associated interim work products (*Draft TM #9 - Summary of Monitoring Network Assessment and Preliminary Monitoring Plan – due 1/31/2020*).
- GSA**s Provide detailed information as to which wells are currently monitored, their specific monitoring objectives, and availability for incorporation into the SGMA required network by **12/31/2019**.
- WG** Review and provide feedback on TM #9 by **2/19/2020**.

## **Tasks without interim deadlines**

**Task 1: Proposition 1 Grant Management, Administration, & Reporting**

**Task 2: Project Management**

**Task 3: Quality Assurance/Quality Control**

**Task 12: Implement Plan for Filling Data Gaps Needed for GSP Preparation**

**Task 14: Develop/Repurpose Numerical Groundwater Model**

**Task 15: Develop Basin-Wide Water Budget**

**Task 17: Stakeholder Engagement Related to Basin Characterization & Analysis**

**Task 18: Participate in Intrabasin & Interbasin Coordination Efforts**

## **Abbreviations**

CBI	Consensus Building Institute
DMS	Data Management System
EKI	EKI Environment & Water, Inc.
GSAs	Groundwater Sustainability Agencies
GSP	Groundwater Sustainability Plan
HCM	Hydrogeologic Conceptual Model
QA/QC	Quality Assurance/Quality Control
SCEP	Stakeholder Communication and Engagement Plan
SGMA	Sustainable Groundwater Management Act
TAC	Technical Advisory Committee
TM	Technical Memorandum
WG	Working Group