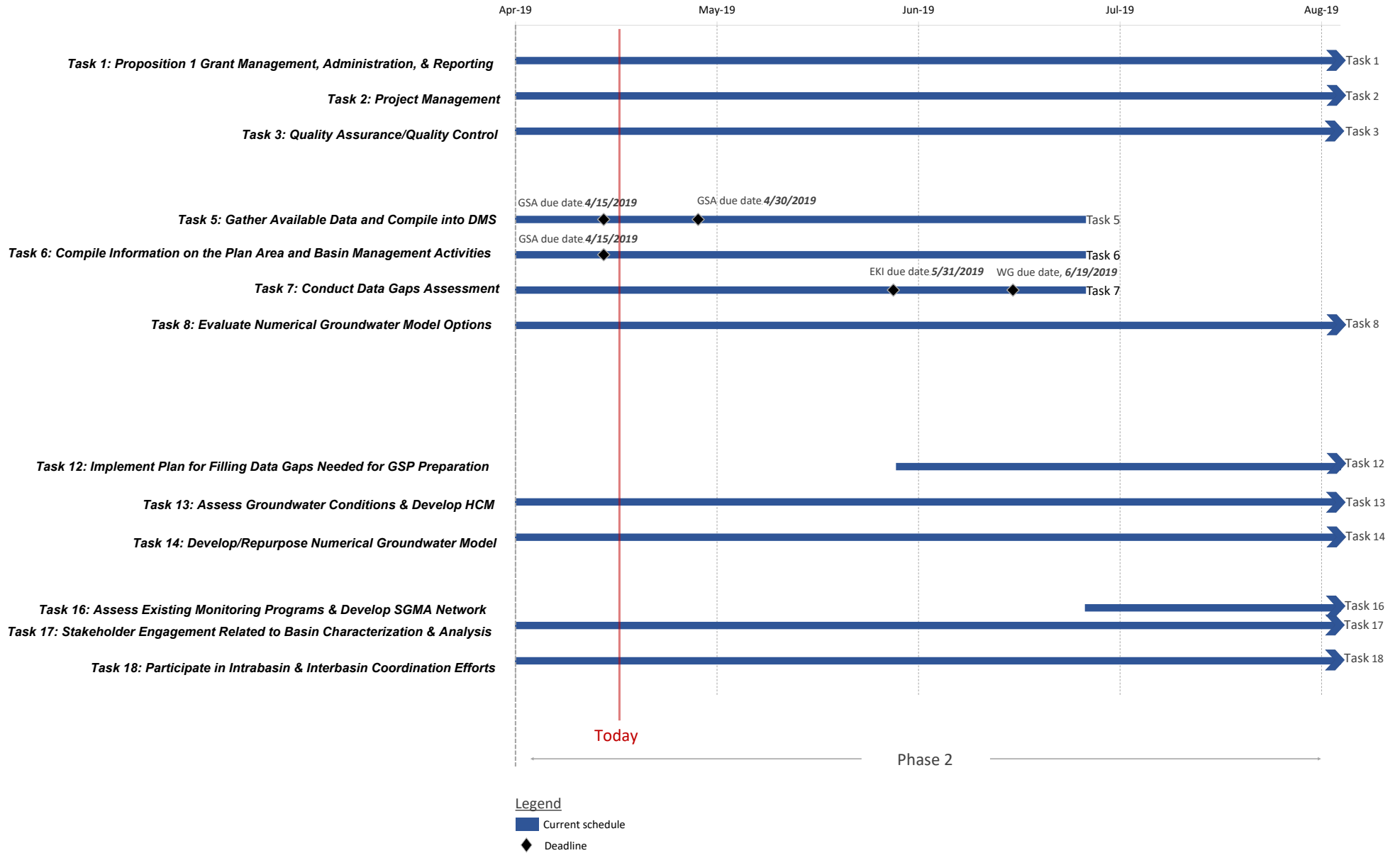


Cosumnes Subbasin GSP Schedule - 3 Month Look Ahead



Deadlines within the next 3 Months

Task 5: Gather Available Data and Compile into DMS

GSAs Stakeholder Surveys due by **2/28/2019**. Compile landowner, local and Basin-specific data (in required format) and send to EKI to be included in the Basin DMS by **4/15/2019**. All data for the DMS must be sent to EKI by **4/30/2019**.

Task 6: Compile Information on the Plan Area and Basin Management Activities

GSAs Respond to data requests regarding information required in the Plan Area by **4/15/2019**.

Task 7: Conduct Data Gaps Assessment

EKI Conduct Basin-wide data gaps assessment and prepare associated work products (*Draft TM #2 – Data Compilation and Data Gaps Assessment – due 5/31/2019*).

WG Review and provide feedback on TM #2 by **6/19/2019**.

Task 8: Evaluate Numerical Groundwater Model Options

EKI Provide recommended model mesh specifications - April

Tasks without interim deadlines

Task 1: Proposition 1 Grant Management, Administration, & Reporting

Task 2: Project Management

Task 3: Quality Assurance/Quality Control

Task 9: Refine Stakeholder Communication and Engagement Plan

Task 10: Conduct Stakeholder Engagement Related to the GSP Foundation Phase

Task 11: Participate in Intrabasin & Interbasin Coordination Efforts

Task 12: Implement Plan for Filling Data Gaps Needed for GSP Preparation

Task 13: Assess Groundwater Conditions & Develop HCM

Task 14: Develop/Repurpose Numerical Groundwater Model

Task 16: Assess Existing Monitoring Programs & Develop SGMA Network

Task 17: Stakeholder Engagement Related to Basin Characterization & Analysis

Task 18: Participate in Intrabasin & Interbasin Coordination Efforts

Abbreviations

| | |
|-------|---|
| CBI | Consensus Building Institute |
| DMS | Data Management System |
| EKI | EKI Environment & Water, Inc. |
| GSAs | Groundwater Sustainability Agencies |
| GSP | Groundwater Sustainability Plan |
| HCM | Hydrogeologic Conceptual Model |
| QA/QC | Quality Assurance/Quality Control |
| SCEP | Stakeholder Communication and Engagement Plan |
| SGMA | Sustainable Groundwater Management Act |
| TAC | Technical Advisory Committee |
| TM | Technical Memorandum |
| WG | Working Group |