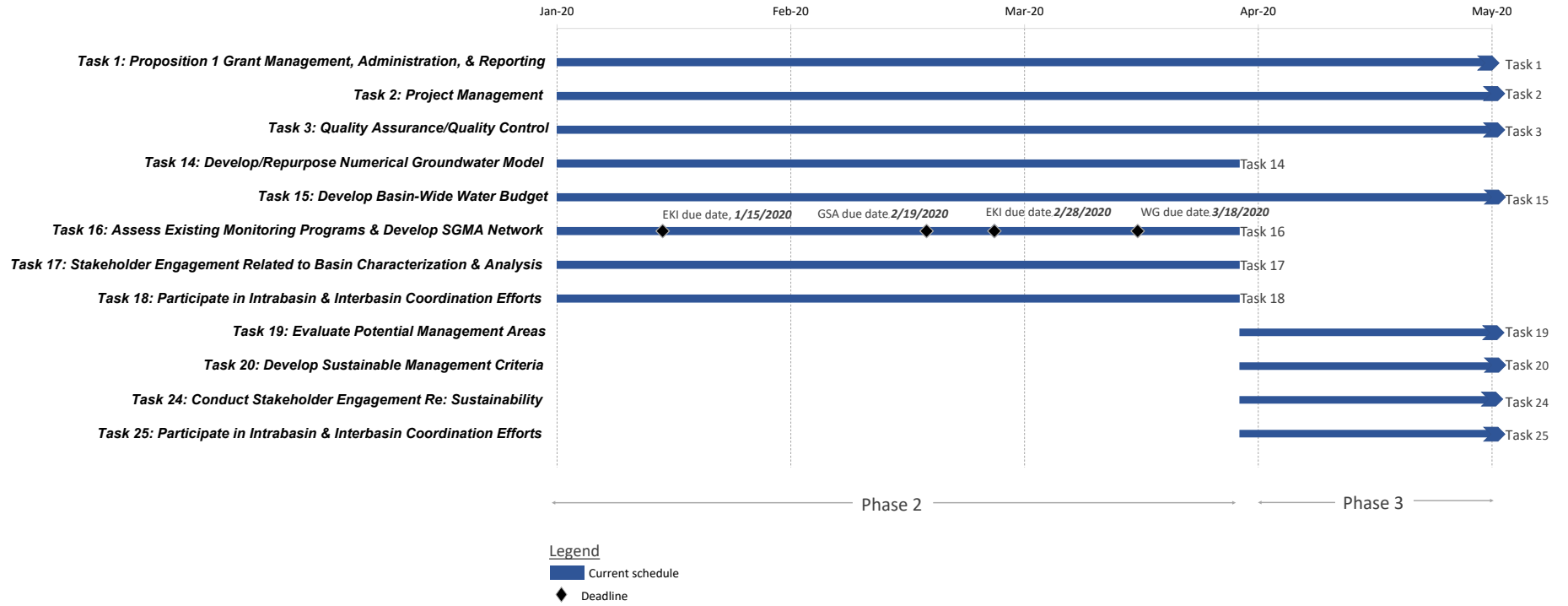


Cosumnes Subbasin GSP Schedule - 3 Month Look Ahead



Deadlines within the next 3 Months

Task 16: Assess Existing Monitoring Programs & Develop SGMA Network

- GSA**s Provide detailed information as to which wells are currently monitored, their specific monitoring objectives, and availability for incorporation into the SGMA required network by **12/31/2019**.
- EKI** Provide GSAs list of potential monitoring network wells in their GSA subarea by 1/15/2020
- GSA**s Confirm well access and owner cooperation to refine list of monitoring network wells and provide to EKI before 2/19/2020.
- EKI** Assess existing monitoring programs and propose a SGMA compliant monitoring network, and prepare the associated interim work products (*Draft TM #9 - Summary of Monitoring Network Assessment and Preliminary Monitoring Plan – due 2/28/2020*).
- WG** Review and provide feedback on TM #9 by **3/18/2020**.

Tasks without interim deadlines

Task 1: Proposition 1 Grant Management, Administration, & Reporting

Task 2: Project Management

Task 3: Quality Assurance/Quality Control

Task 14: Develop/Repurpose Numerical Groundwater Model

Task 15: Develop Basin-Wide Water Budget

Task 16: Assess Existing Monitoring Programs & Develop SGMA Network

Task 17: Stakeholder Engagement Related to Basin Characterization & Analysis

Task 18: Participate in Intrabasin & Interbasin Coordination Efforts

Task 19: Evaluate Potential Management Areas

Task 20: Develop Sustainable Management Criteria

Task 24: Conduct Stakeholder Engagement Re: Sustainability

Task 25: Participate in Intrabasin & Interbasin Coordination Efforts

Abbreviations

CBI	Consensus Building Institute
DMS	Data Management System
EKI	EKI Environment & Water, Inc.
GSA	Groundwater Sustainability Agencies
GSP	Groundwater Sustainability Plan
HCM	Hydrogeologic Conceptual Model
QA/QC	Quality Assurance/Quality Control
SCEP	Stakeholder Communication and Engagement Plan
SGMA	Sustainable Groundwater Management Act
TAC	Technical Advisory Committee
TM	Technical Memorandum
WG	Working Group