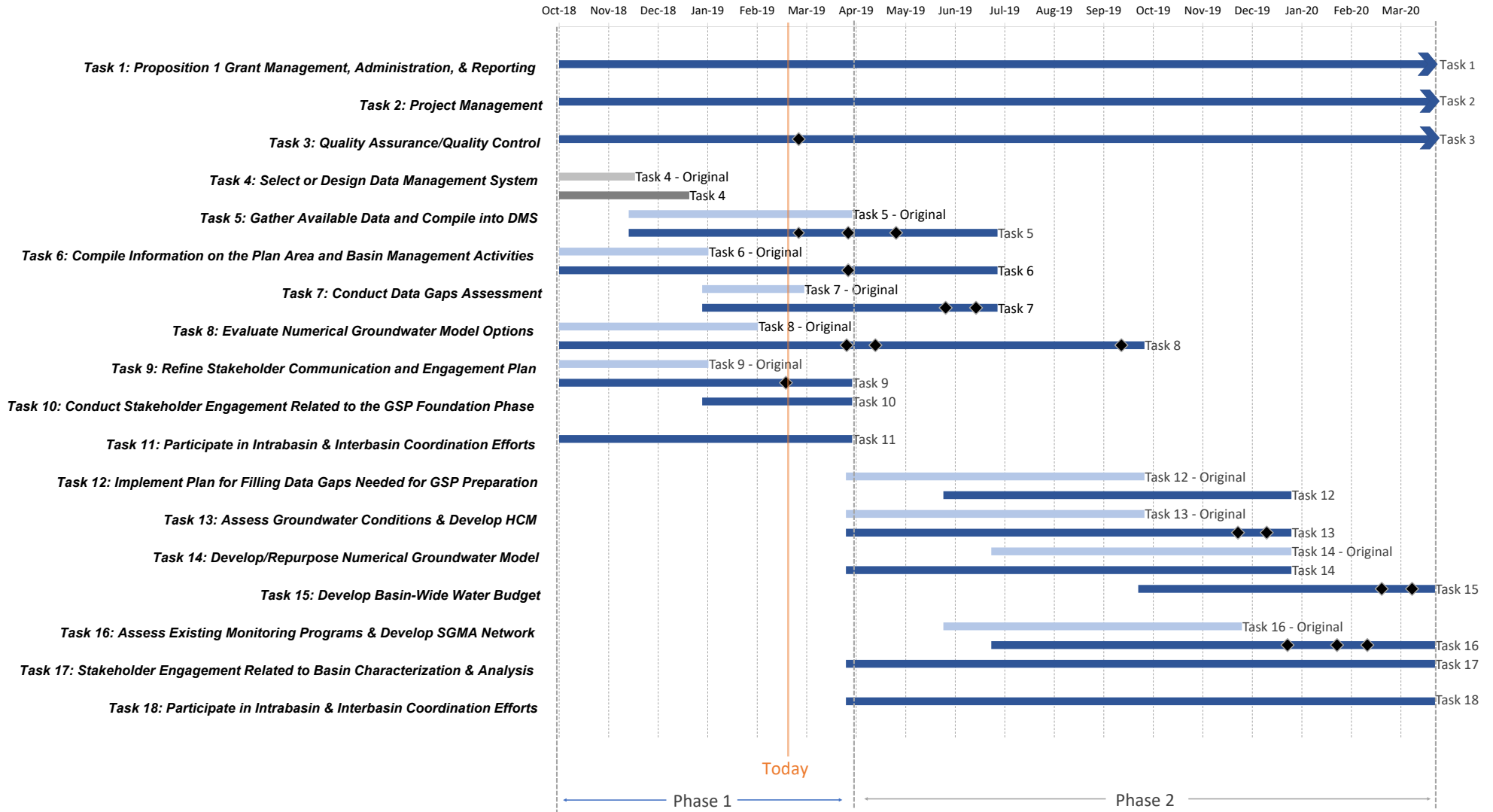


Cosumnes Subbasin GSP Schedule - Phase 1 and Phase 2



Legend

- Current schedule
- Superseded original schedule
- Completed tasks
- Deadline

Phase 1 Tasks

Task 5: Gather Available Data and Compile into DMS

EKI Provide technical support required to populate and manage the Basin DMS through **6/30/2019**.

GSAs Stakeholder Surveys due by **2/28/2019**. Compile landowner, local and Basin-specific data (in required format) and send to EKI to be included in the Basin DMS by **3/31/2019**. All data for the DMS must be sent to EKI by **4/30/2019**.

Task 6: Compile Information on the Plan Area and Basin Management Activities

EKI Provide technical support required to compile information on the Plan Area and Basin Management Activities through **6/30/2019**.

GSAs Respond to data requests regarding information required in the Plan Area by **3/31/2019**.

Task 7: Conduct Data Gaps Assessment

EKI Conduct Basin-wide data gaps assessment and prepare associated work products (*Draft TM #2 – Data Compilation and Data Gaps Assessment – due 5/31/2019*).

WG Review and provide feedback on TM #2 by **6/19/2019**.

Task 8: Evaluate Numerical Groundwater Model Options

EKI Conduct the evaluation of numerical groundwater model options and prepare associated work products (*Updated Draft TM #3 – Numerical Groundwater Model Evaluations and Recommendations – due 3/31/2019*).

WG Review and provide feedback on TM #3; Decide on modeling direction by **4/17/2019**; Make final decision regarding the numerical groundwater model by **9/18/2019**.

Task 9: Refine Stakeholder Communication and Engagement Plan

EKI Provide limited technical support to review and provide feedback on the SCEP and other associated work products developed by the Water Forum and CBI through **3/31/2019**.

WG Review and provide input to Basin-wide SCEP to align with local outreach goals and objectives by **2/20/2019**.

Task 10: Conduct Stakeholder Engagement Related to the GSP Foundation Phase

EKI Provide limited support to the Water Forum and CBI to conduct preliminary stakeholder engagement-related activities, including: Preparation of one stakeholder workshop presentation, attendance at one stakeholder workshop through **3/31/2019**.

GSAs Begin to implement the SCEP within local jurisdictions (meetings, stakeholder survey, public notices, etc.) through **3/31/2019**.

Task 11: Participate in Intrabasin & Interbasin Coordination Efforts

EKI Provide technical support for Phase 1 intrabasin and interbasin coordination efforts through attendance at regular Working Group/TAC meetings and preparation of associated materials, attendance at regular SGMA meetings in neighboring subbasins (up to one per month), and through GSA-specific outreach, as needed through **3/31/2019**.

GSAs Attend regularly scheduled Working Group/TAC meetings to provide input on matters associated with GSP development through **3/31/2019**.

Phase 2 Tasks

Task 12: Implement Plan for Filling Data Gaps Needed for GSP Preparation

EKI Provide technical support required to populate and manage the Basin DMS through **12/31/2019**.

GSAs Process and analyze available well completion reports. Conduct pumping tests, sample and analyze groundwater quality, collect groundwater elevation data through **12/31/2019**.

Task 13: Assess Groundwater Conditions & Develop HCM

EKI Develop the Groundwater Conditions Assessment and Hydrogeologic Conceptual model and associated interim work products (*Draft TM #6 – Groundwater Conditions and Hydrogeologic Conceptual Model – due 11/30/2019*).

WG Review and provide feedback on TM #6 by **12/18/2019**.

Task 14: Develop/Repurpose Numerical Groundwater Model

EKI Develop or repurpose a numerical groundwater model for use in the GSP and develop the associated interim work products through **12/31/2019**.

Task 15: Develop Basin-Wide Water Budget

EKI Prepare a current, historical and future water budget and the associated interim work products. (*Draft TM #8 - Water Budget and Preliminary Estimate of Sustainable Yield – due 2/29/2020*).

WG Review and provide feedback on TM #8 by **3/18/2020**.

Task 16: Assess Existing Monitoring Programs & Develop SGMA Network

EKI Assess existing monitoring programs and propose a SGMA compliant monitoring network, and prepare the associated interim work products (*Draft TM #9 - Summary of Monitoring Network Assessment and Preliminary Monitoring Plan – due 1/31/2020*).

GSAs Provide detailed information as to which wells are currently monitored, their specific monitoring objectives, and availability for incorporation into the SGMA required network by **12/31/2019**.

WG Review and provide feedback on TM #9 by **2/19/2020**.

Task 17: Stakeholder Engagement Related to Basin Characterization & Analysis

- EKI** Provide limited support to the Water Forum and CBI to conduct stakeholder engagement-related activities to Basin Characterization, including: Preparation of up to 2 stakeholder workshop presentations, attendance at up to 2 stakeholder workshops through **3/31/2020**.
- GSAs** Continue to implement the SCEP within local jurisdictions (meetings, stakeholder survey, public notices, etc.) through **3/31/2020**.

Task 18: Participate in Intrabasin & Interbasin Coordination Efforts

- EKI** Provide technical support for Phase 2 intrabasin and interbasin coordination efforts through attendance at regular Working Group/TAC meetings and preparation of associated materials, attendance at regular SGMA meetings in neighboring subbasins (up to one per month), and through GSA-specific outreach, as needed through **3/31/2020**.
- GSAs** Attend regularly scheduled Working Group/TAC meetings to provide input on matters associated with GSP development and on-going data sharing through **3/31/2020**.

Project Long Tasks

Task 1: Proposition 1 Grant Management, Administration, & Reporting

- EKI** Provide a supporting role to Sacramento County to satisfy Prop 1 grant administration and reporting requirements.
- GSAs** Provide any required GSA-specific materials to the County for Prop 1 reporting purposes.

Task 2: Project Management

- EKI** Conduct project management efforts Project budgets, project schedules, records management, contract compliance.

Task 3: Quality Assurance/Quality Control

- EKI** Prepare and implement a QA/QC Plan. Plan due by **2/28/2019**.

Completed Tasks

Task 4: Select or Design Data Management System

- EKI** Develop options for DMS selection development and prepare associated work products (*Draft TM #1-Data Management System Evaluation and Selection*).
- WG** Review and provide feedback on TM #1; Select DMS.

Abbreviations

- CBI Consensus Building Institute
- DMS Data Management System
- EKI EKI Environment & Water, Inc.
- GSAs Groundwater Sustainability Agencies
- GSP Groundwater Sustainability Plan
- HCM Hydrogeologic Conceptual Model
- QA/QC Quality Assurance/Quality Control
- SCEP Stakeholder Communication and Engagement Plan
- SGMA Sustainable Groundwater Management Act
- TAC Technical Advisory Committee
- TM Technical Memorandum
- WG Working Group