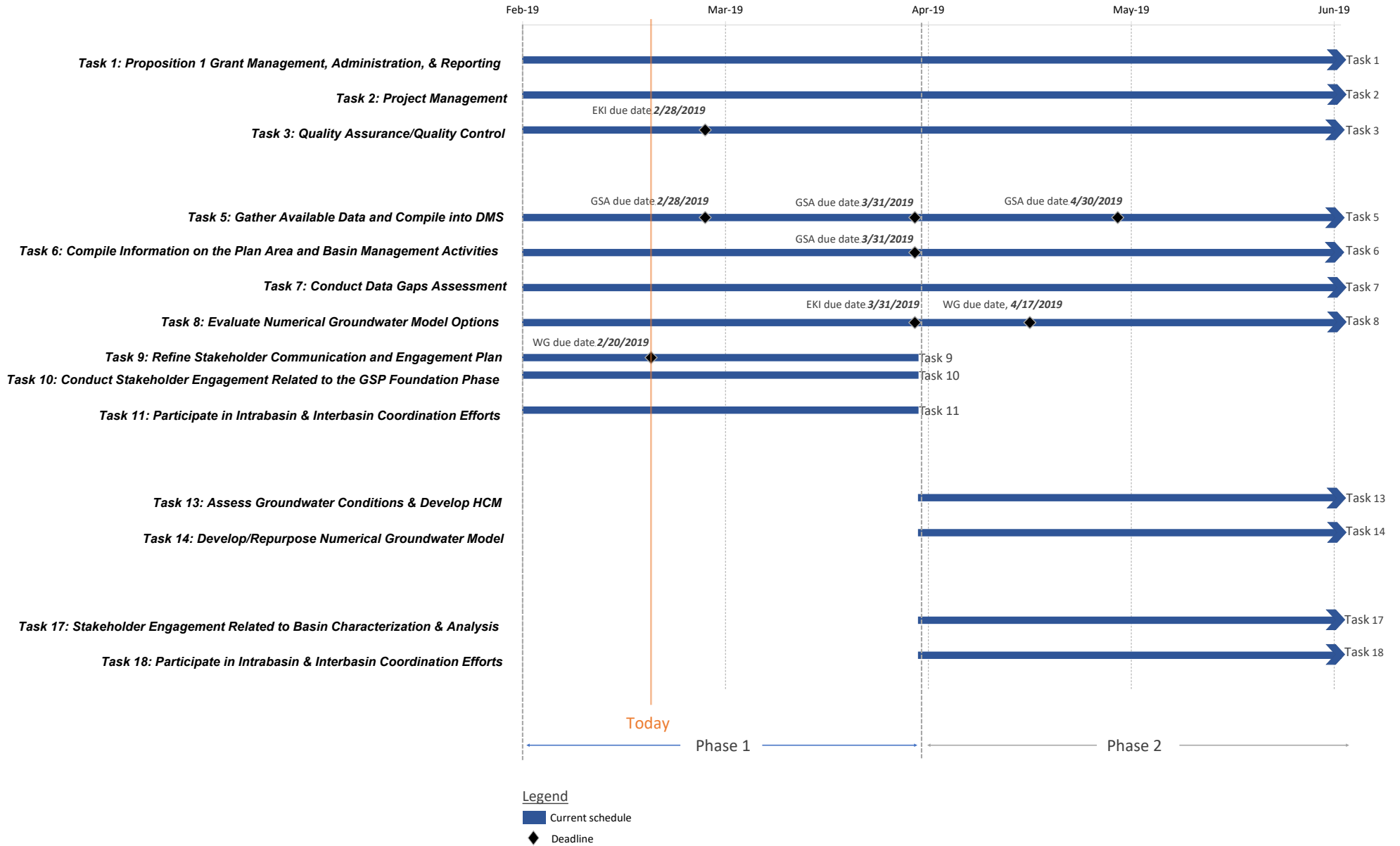


Cosumnes Subbasin GSP Schedule - 3 Month Look Ahead



Deadlines within the next 3 Months

Task 3: Quality Assurance/Quality Control

EKI Prepare and implement a QA/QC Plan. Plan due by **2/28/2019**.

Task 5: Gather Available Data and Compile into DMS

GSAs Stakeholder Surveys due by **2/28/2019**. Compile landowner, local and Basin-specific data (in required format) and send to EKI to be included in the Basin DMS by **3/31/2019**. All data for the DMS must be sent to EKI by **4/30/2019**.

Task 6: Compile Information on the Plan Area and Basin Management Activities

GSAs Respond to data requests regarding information required in the Plan Area by **3/31/2019**.

Task 7: Conduct Data Gaps Assessment

EKI Conduct Basin-wide data gaps assessment and prepare associated work products (*Draft TM #2 – Data Compilation and Data Gaps Assessment – due 5/31/2019*).

WG Review and provide feedback on TM #2 by **6/19/2019**.

Task 8: Evaluate Numerical Groundwater Model Options

EKI Conduct the evaluation of numerical groundwater model options and prepare associated work products (*Updated Draft TM #3 – Numerical Groundwater Model Evaluations and Recommendations – due 3/31/2019*).

WG Review and provide feedback on TM #3; Decide on modeling direction by **4/17/2019**; Make final decision regarding the numerical groundwater model by **9/18/2019**.

Task 9: Refine Stakeholder Communication and Engagement Plan

WG Review and provide input to Basin-wide SCEP to align with local outreach goals and objectives by **2/20/2019**.

Tasks without interim deadlines

Task 1: Proposition 1 Grant Management, Administration, & Reporting

Task 2: Project Management

Task 3: Quality Assurance/Quality Control

Task 10: Conduct Stakeholder Engagement Related to the GSP Foundation Phase

Task 11: Participate in Intrabasin & Interbasin Coordination Efforts

Task 13: Assess Groundwater Conditions & Develop HCM

Task 14: Develop/Repurpose Numerical Groundwater Model

Task 17: Stakeholder Engagement Related to Basin Characterization & Analysis

Task 18: Participate in Intrabasin & Interbasin Coordination Efforts

Abbreviations

CBI	Consensus Building Institute
DMS	Data Management System
EKI	EKI Environment & Water, Inc.
GSAs	Groundwater Sustainability Agencies
GSP	Groundwater Sustainability Plan
HCM	Hydrogeologic Conceptual Model
QA/QC	Quality Assurance/Quality Control
SCEP	Stakeholder Communication and Engagement Plan
SGMA	Sustainable Groundwater Management Act
TAC	Technical Advisory Committee
TM	Technical Memorandum
WG	Working Group